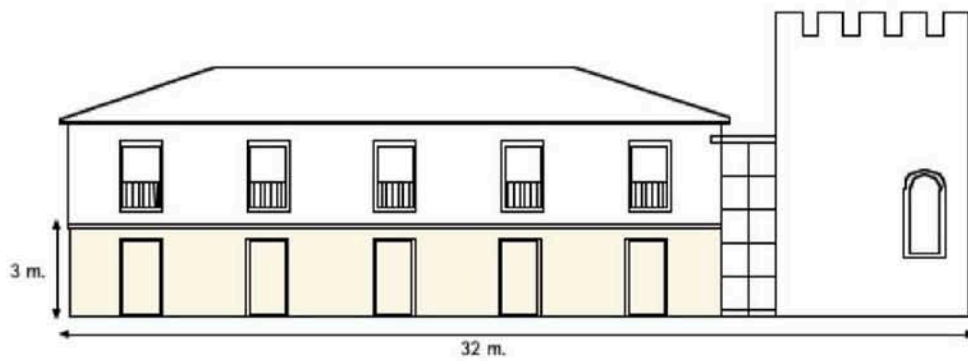




# Alcazaba

The Alcazaba has the feel of an ancient arab fort, right down to its bronze front door and the ornaments which decorate the dining area, everything contributes to the area's unique personality.

From the inside of a joining Tower there are magnificent views of the gardens.



m <sup>2</sup>	300
Indoor	yes
Outdoor	no
Nº people standing	250*
Nº people seated	250*

\*These numbers are not final and will depend on the needs of the customer (scenery orchestras, dance floor, etc....)

